

Cliffton
PALLADIUM
 ULTRA LUXURIOUS APARTMENTS

RERA NO.: P-IND-24-4894



SCAN QR FOR



LOCATION

SCAN QR FOR



WEBSITE

SCAN QR FOR



WALK-THROUGH

Project by



Landowner



Developed by



Architect



Designed by



Cliffton
PALLADIUM
 ULTRA LUXURIOUS APARTMENTS

Site Address: Scheme No. 140, on RE2 Road, Bicholi Mardana, Near Agarwal Public School

For Bookings Contact: 89628 02797, +91 95163 34000 | Website: clifftongroupindia.com

We have also tied-up with various banks that are willing to offer loan facility to ease your worries of owning your dream residential space.

Disclaimer: This brochure is meant only for promotional purpose and has no legal value. The plans, specifications, images and other details herein are only indicative and subject to the approval of the concerned authorities. The Developer/Owner reserved the right to change any of all of these or extend the number of floors in the interest of the developmen without prior notice or obligation. Artist's impressions are used to illustrate the amenities, specification, images and other and other details and these may be applicable to select apartments only. Tolerance of +/-2% is possible in the unit areas on the account of design and construction variance. All brands stated are subject to final decision of the project architect. This printed material does not constitute an offer and/or contract of any type between the developer/owner and the receipt. Any purchases/lease of this development shall be governed by the terms and conditions of the Agreement for Sale/Lease entered into between the parties, and no deal mentioned in this printed material shall in any way govern such transaction.



SUPERLATIVE VISION IS KEY

The Clifton group is one of the best real estate groups in the city. With the experience of more than 20 years in the business, Clifton group dreams of providing innovative and quality homes to families. The group has a superlative vision of giving the city some of the marvellous real estate projects. With more than 20 projects in the City, the Clifton group is a family of 1000+ happy residences.

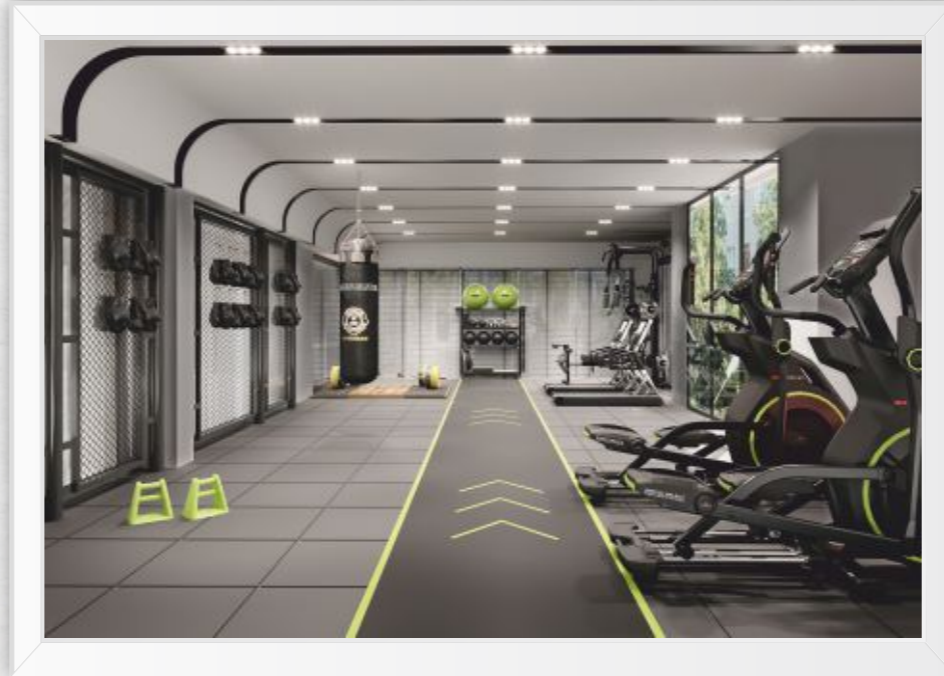




CLIFFTON
PALLADIUM

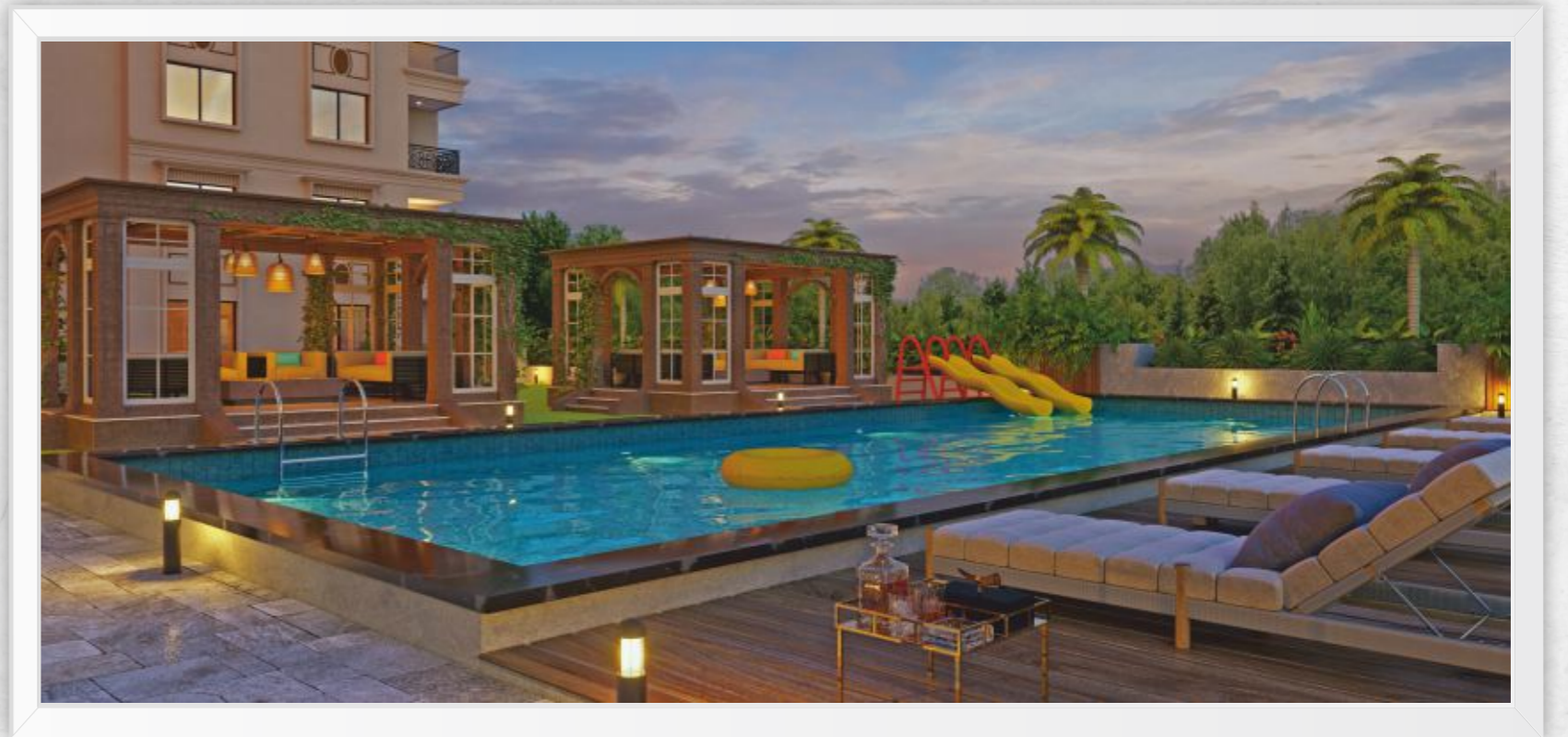
TRULY
SUPERLATIVE

Clifton Palladium, where every day feels like a celebration of elegance & refinement, creating a haven of Luxury for the special ones.



SUPERLATIVE AMENITIES

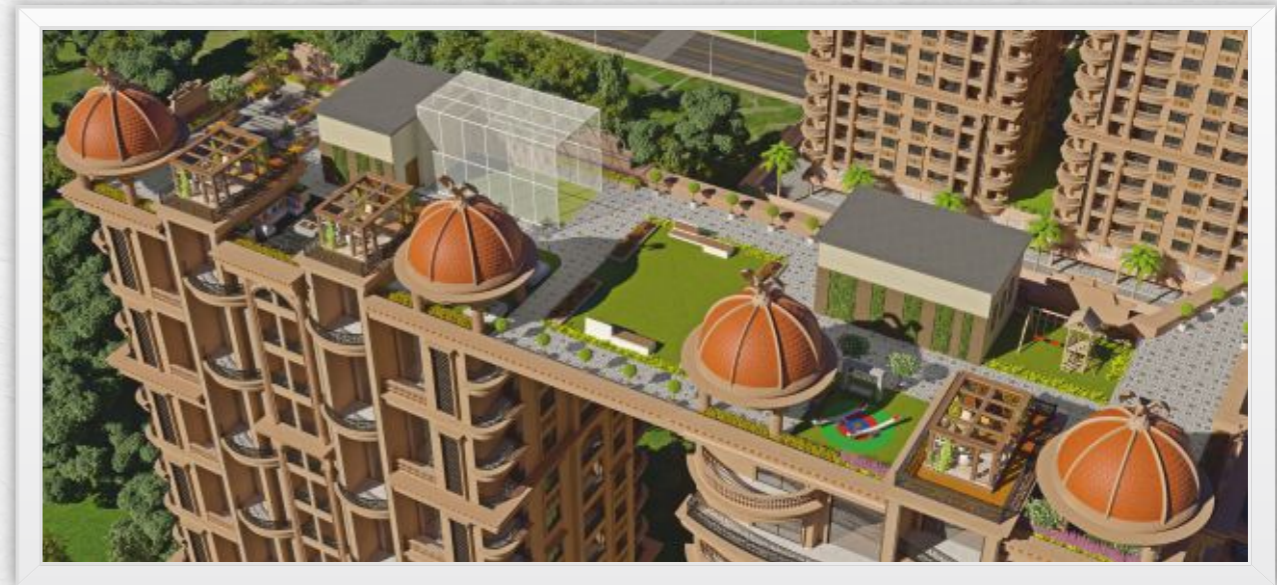
- SWIMMING POOL
- YOGA ROOM • STEAM • GYM
- 24/7 POWER BACKUP
- ROOFTOP TURF



SUPERLATIVE LIFESTYLE

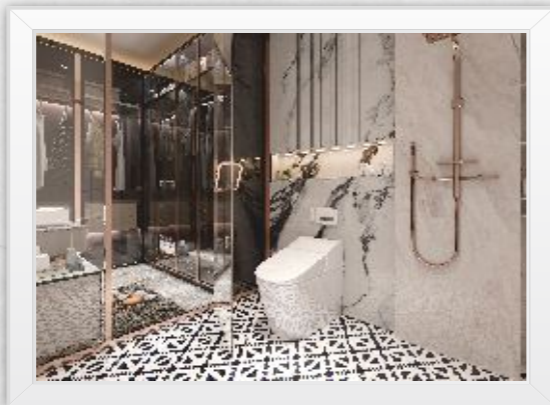


- JOGGING TRACK • ON CAMPUS TEMPLE • ALL PURPOSE BANQUET SPACE
- MINI THEATRE • LANDSCAPE GARDEN • MULTIPURPOSE ROOFTOP



DISCOVER THE SUPERLATIVE

- VISITOR/BUSINESS LOUNGE • AIR INFLATOR
- SAUNA • JACUZZI • BBQ AREA



SPECIFICATIONS (ULTRA LUXURY)

- Domal type /UPVC series aluminium windows.
- High-end CP and sanitary fittings (equivalent to Grohe and similar brands)
- Superior quality plastic enamel.
- Smart switches in living dining & kitchen area.
- Key card/ biometric access in lift.
- High end ISI marked electric fixtures & fittings.
- Full height bathroom tiles.
- Hot & cold water mixtures in wash basin.
- Shower partition (cubicle) in all bathrooms.
- Smart lock with video door phone.
- Extra heightened ceiling.* double heightened drawing & balcony.
- Dry/ island platform in kitchen.* sound reduction windows.
- Satin finish tiles 3 by 5 or larger in dining/ living/ kitchen.
- Wooden flooring in double heightened drawing & 1 master bedroom.
- 5ft wide grand double door entrance.
- Double bowl quartz kitchen sink.

SPECIFICATIONS (LUXURY)

- Grand entrance door with teak architrave/panelling.
- Luxury/imported marble finish flooring in the apartment.
- High gloss door height vitrified tiles in bathroom.
- Video door phone at entrance.
- Powder coated aluminium sliding window.
- Utility balcony for washing & drying.
- Kohler or equivalent sanitary & CP fittings.
- Quartz single bowl sink in kitchen.
- Polished veneer doors.
- ISI marked electric fittings & fixtures.
- Premium quality plastic paint.
- Wooden flooring in master bedroom.

KEY FEAUTURES



Super sized 3, 4 & 5 Bed Opulent residences.



Ample of car parking space.



Bio metric secured ground floor entrance lobby.



Maximum living space with minimal wastage.



24/7 security covered campus.



Sprawling Sundecks with sweeping views of sunsets.



French windows offering abundance of natural light.



CCTV surveillance.



Double heightened ground floor lobby with waiting lounge.



Fire sprinkler system for all parking levels.



Open kitchen.



Buildings designed for earthquake loads as per applicable I.S Code.



Roof top amenities.



Inbuilt gas pipeline.



Gated campus.



CLIFFTON CORPORATE AT VIJAY NAGAR



CLIFFTON PRIDE AT NIPANIA



CLIFFTON PARK AT VIJAY NAGAR

SUPERLATIVE PAST PROJECTS

The Clifton Group has been a prominent real estate group for the past two decades, achieving remarkable success. With each project, the Clifton Group has consistently delivered exceptional developments, earning the satisfaction of customers and setting new standards in world-class infrastructure. The commitment to excellence is evident in every endeavor undertaken by the Clifton Group.



SCH. NO. 78



AB ROAD



SCH. NO. 140



NIPANIA MAIN ROAD



KANADIA ROAD

SUPERLATIVE LOCATION



CONNECTIVITY

- World Cup Square - 4 Minute
- Bypass Road - 4 Minutes
- AB Road - 8 Minutes
- Khandwa Road - 10 Minutes



CONVENIENCE

- IT Park - 11 Minutes
- Navlakha Bus Stand - 15 Minutes
- Railway Station - 14 Minutes
- Airport - 30 Minutes



SCHOOLS & COLLEGES

- Agrawal Public School - 1 Minute
- St. Raphael's School - 9 Minutes
- St Paul H.S. School - 10 Minutes
- The Daly College - 10 Minutes



MEDICAL FACILITIES

- Geeta Bhavan - 8 Minutes
- Noble Hospital - 10 Minutes
- Mayur Hospital - 11 Minutes
- MY Hospital - 13 Minutes



SHOPPING CENTRES

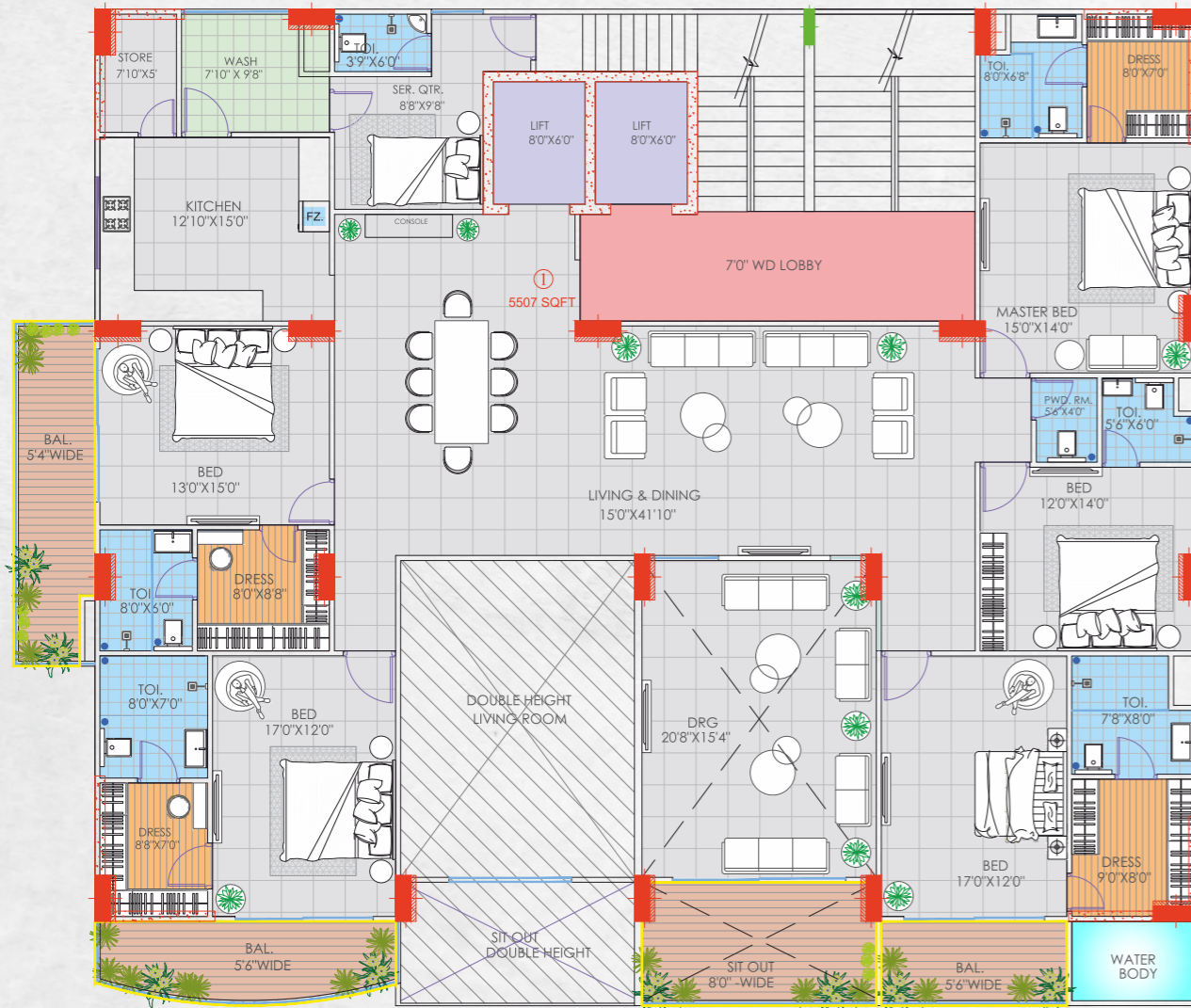
- Pheonix Citadell - 10 Minutes
- C21 Mall - 15 Minutes
- Treasure Island - 15 Minutes
- Zodiac Mall - 2 Minutes



**SUPERLATIVE
PLANNING**

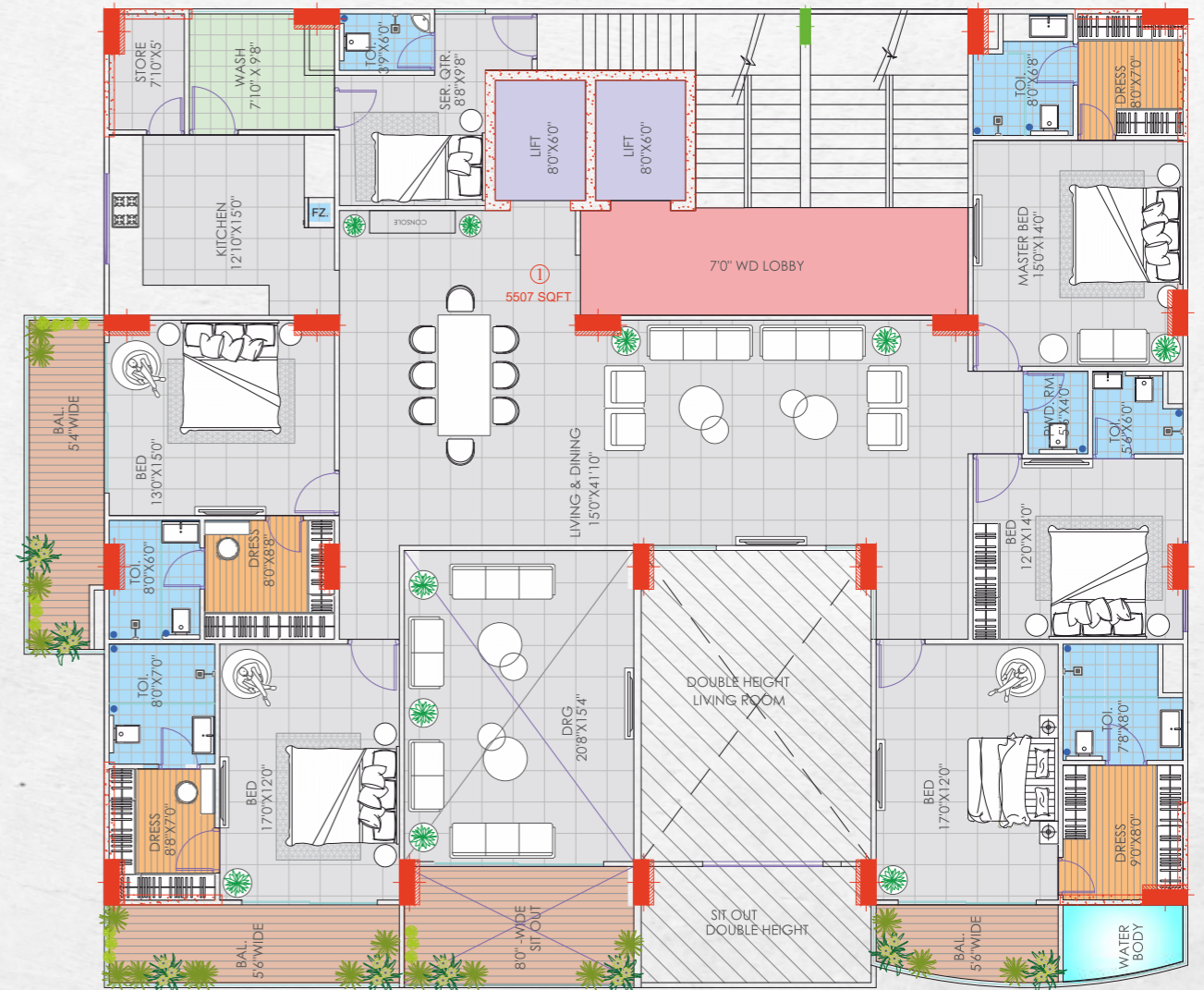
ZURICH 1
ODD FLOORS

5 BHK: AREA 5507 SQ. FT.



ZURICH 1
EVEN FLOORS

5 BHK: AREA 5507 SQ. FT.



ZURICH 2 ODD FLOORS

5 BHK: AREA 5507 SQ. FT.



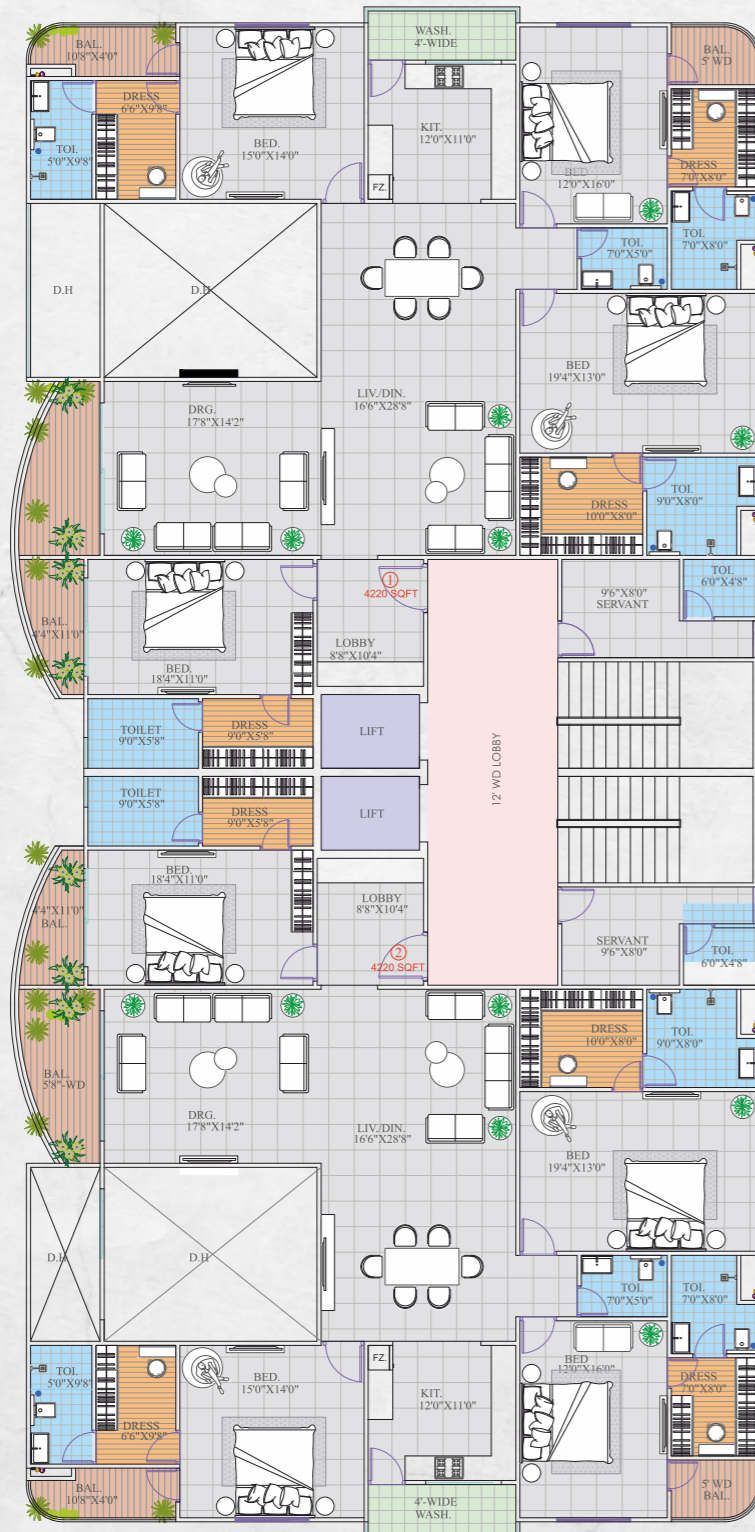
ZURICH 2 EVEN FLOORS

5 BHK: AREA 5507 SQ. FT.



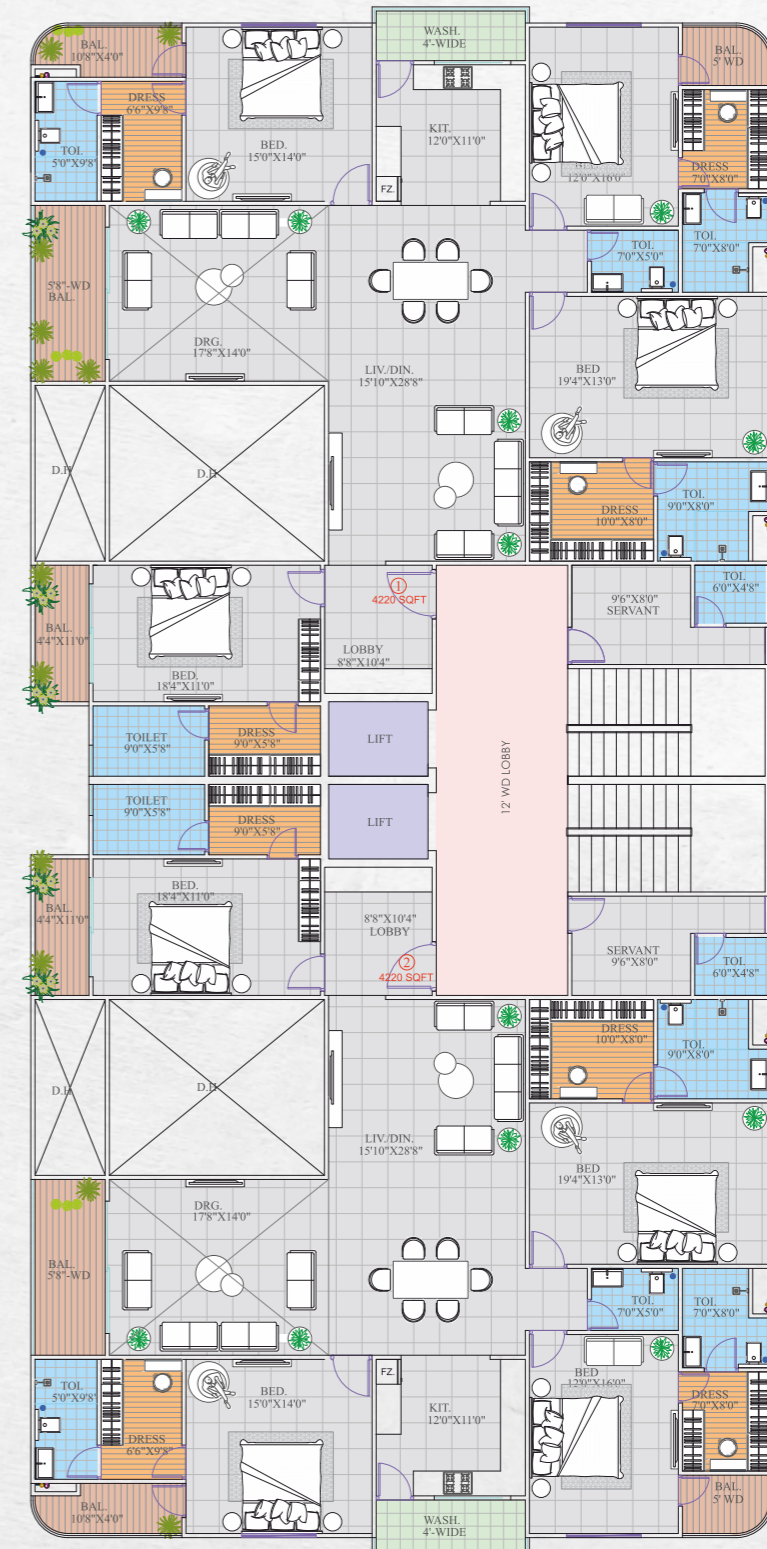
ZURICH 3 ODD FLOORS

4 BHK: AREA 4220 SQ FT.



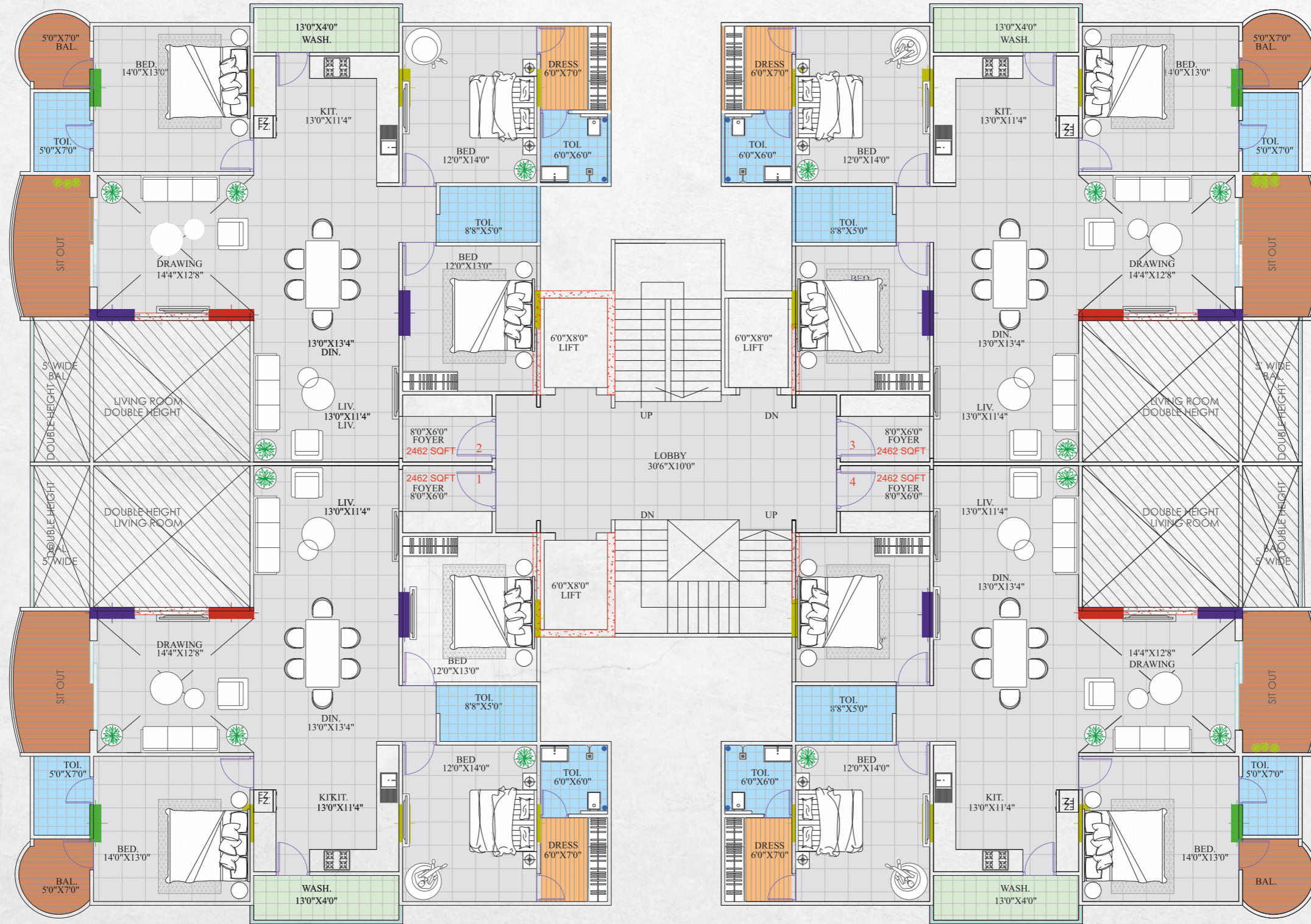
ZURICH 3 EVEN FLOORS

4 BHK: AREA 4220 SQ FT.



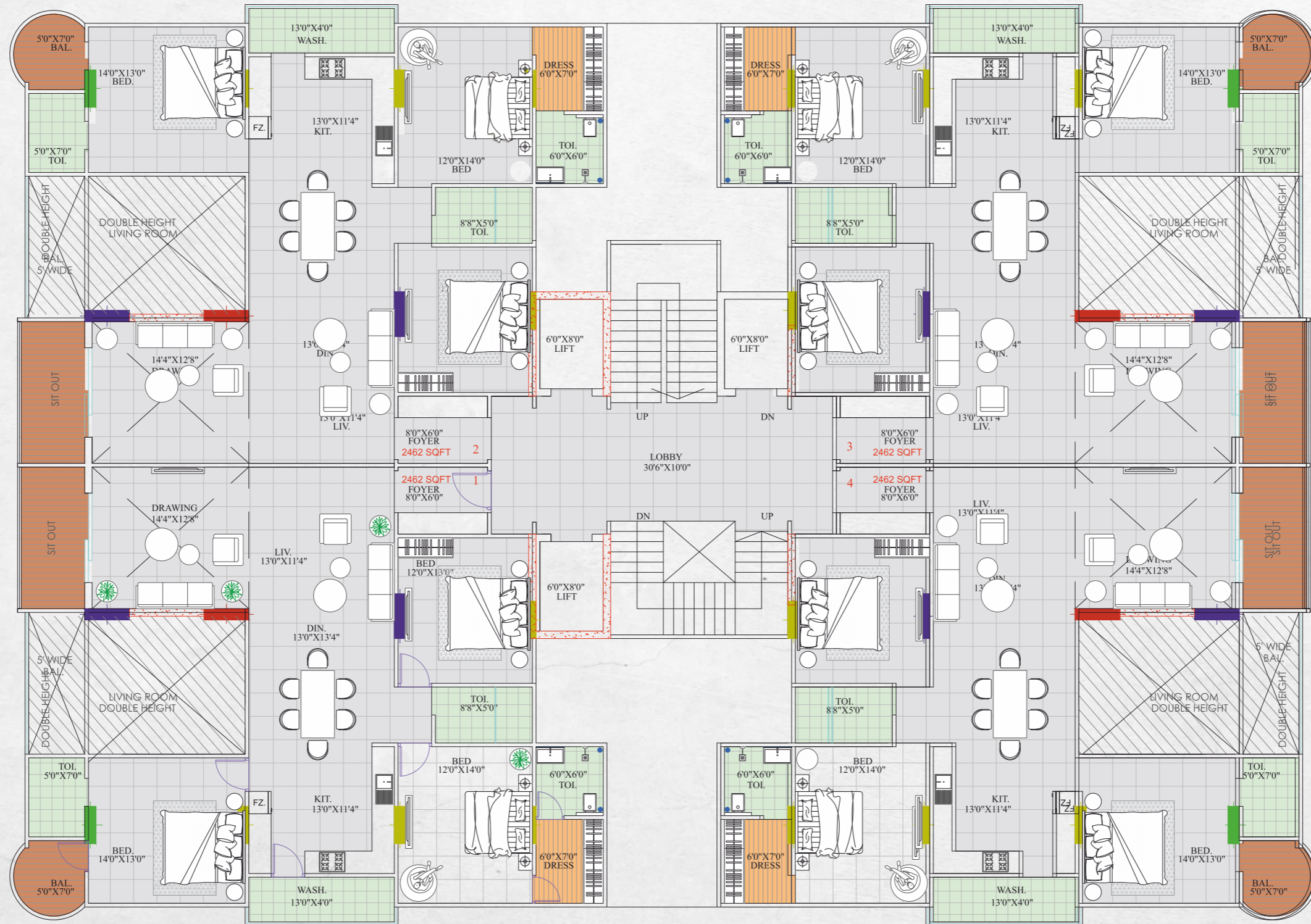
MARINA 1 ODD FLOORS

3 BHK: AREA 2462 SQ. FT.



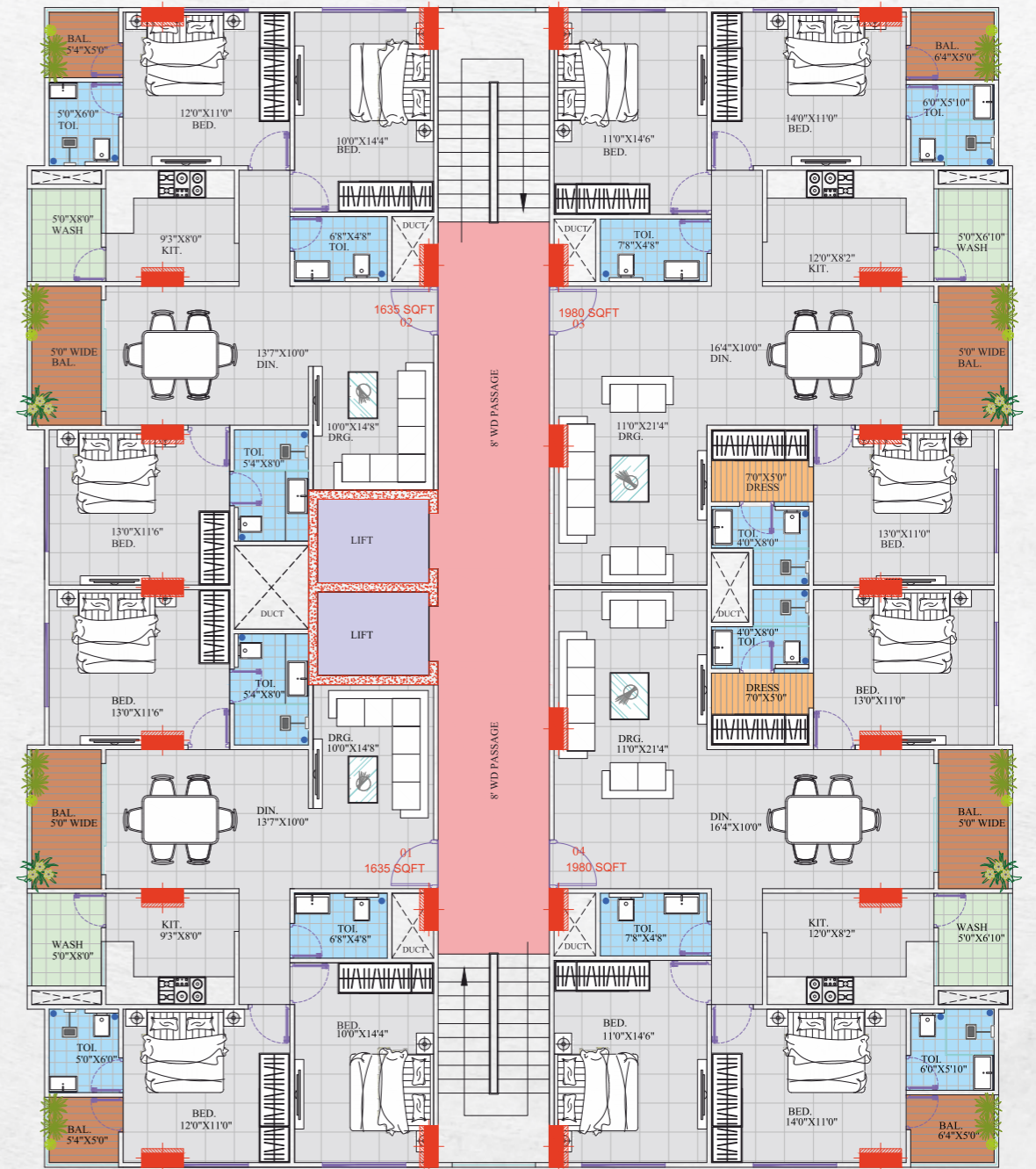
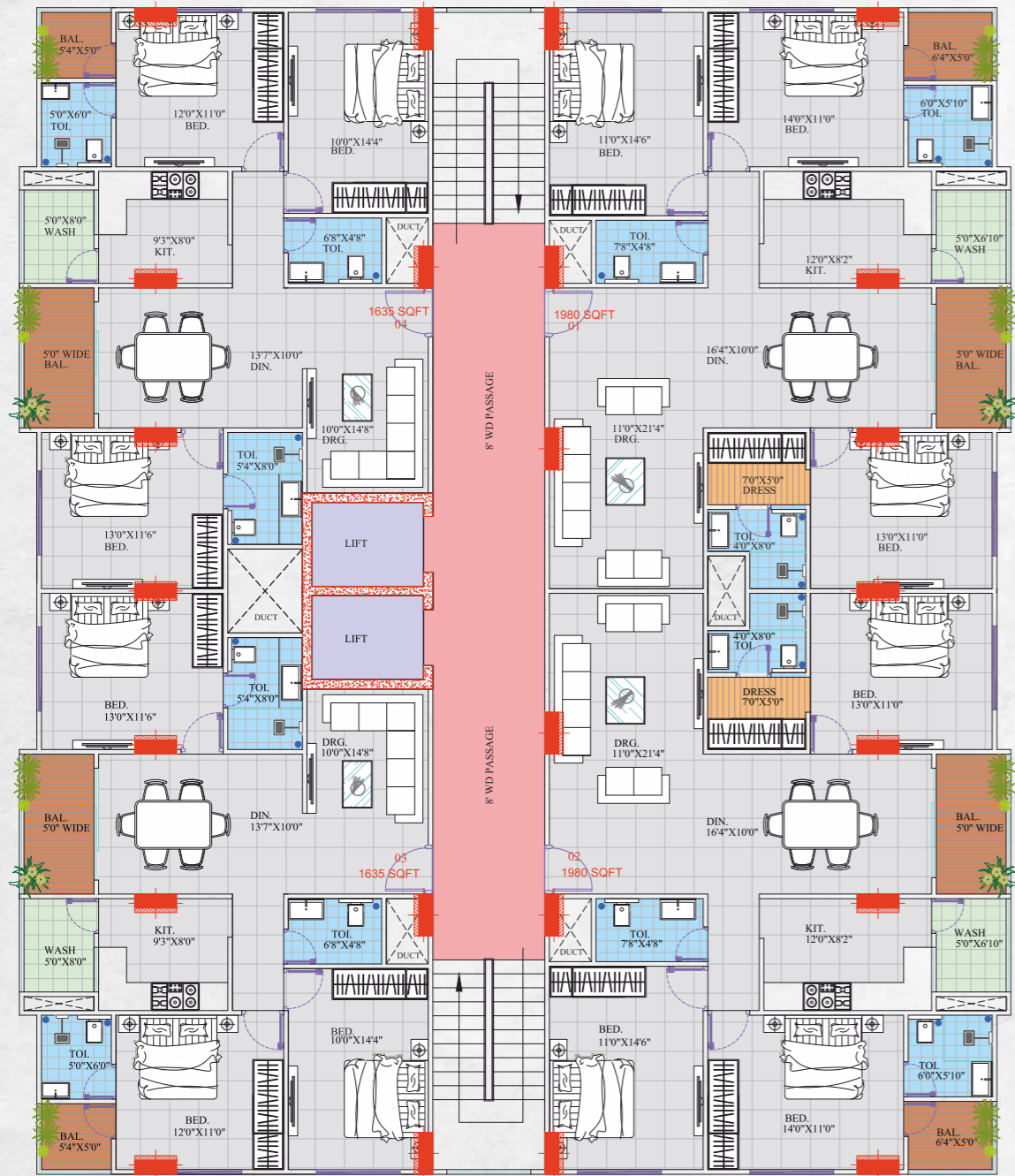
MARINA 1
EVEN FLOORS

3 BHK: AREA 2462 SQ. FT.



MARINA 2

MARINA 3



3 BHK: AREA 1635 SQ FT.

3 BHK: AREA 1980 SQ FT.

3 BHK: AREA 1635 SQ FT.

3 BHK: AREA 1980 SQ FT.

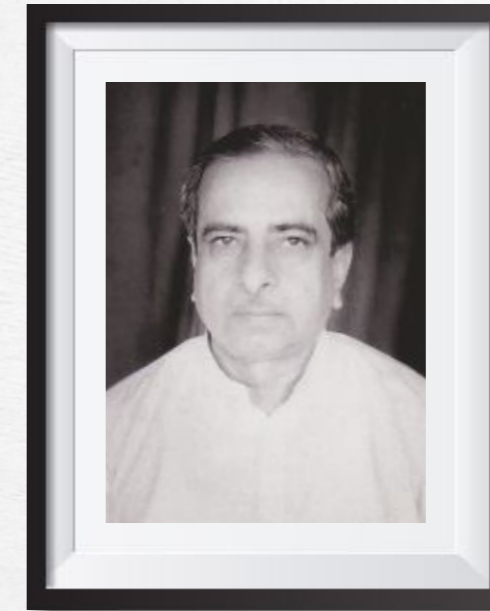


SUPERLATIVE LOCATION



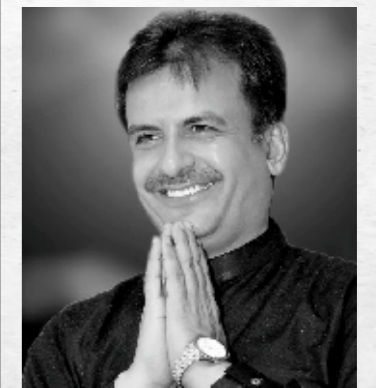
Site: Near Agarwal Public School, Main RE2 Road

SUPERLATIVE INSPIRATION



Late Shri Vallabhdas Valbhani
Founder, K. Vallabh Group

With the blessings of Shri Sai Sadhram Saheb and the late Shri Vallabhdas Valbhani, the company is forging ahead on a remarkable journey toward excellence. This pursuit is grounded in a steadfast commitment to maintaining international quality construction standards, ensuring that each project meets the highest benchmarks of craftsmanship and innovation. Beyond these technical standards, the company is dedicated to upholding strong ethics, transparency, reliability, and professionalism in all its operations. These core values are complemented by a commitment to reflexivity, ensuring that the company remains adaptable and responsive to the evolving needs of its clients and the industry. Through this holistic approach, the company strives to build lasting relationships and deliver exceptional results, embodying the principles and vision of its esteemed leaders.



Saint Shri
Sai Sadhram Saheb



Vertical Homes is an associate of renowned K. Vallabh Group, a company founded by the visionaries driven by the will to provide client satisfaction, value added services, quality, continuous improvement and on-time completion of projects within budgets. Working in compliance with the vision and beliefs of the parent company, K. Vallabh Group has grown as a trust worthy real estate group known for innovation and quality. In a journey of over 2 decades K. Vallabh Group has delivered some outstanding projects that stand as landmark creations in the industry.