

S.S.D.



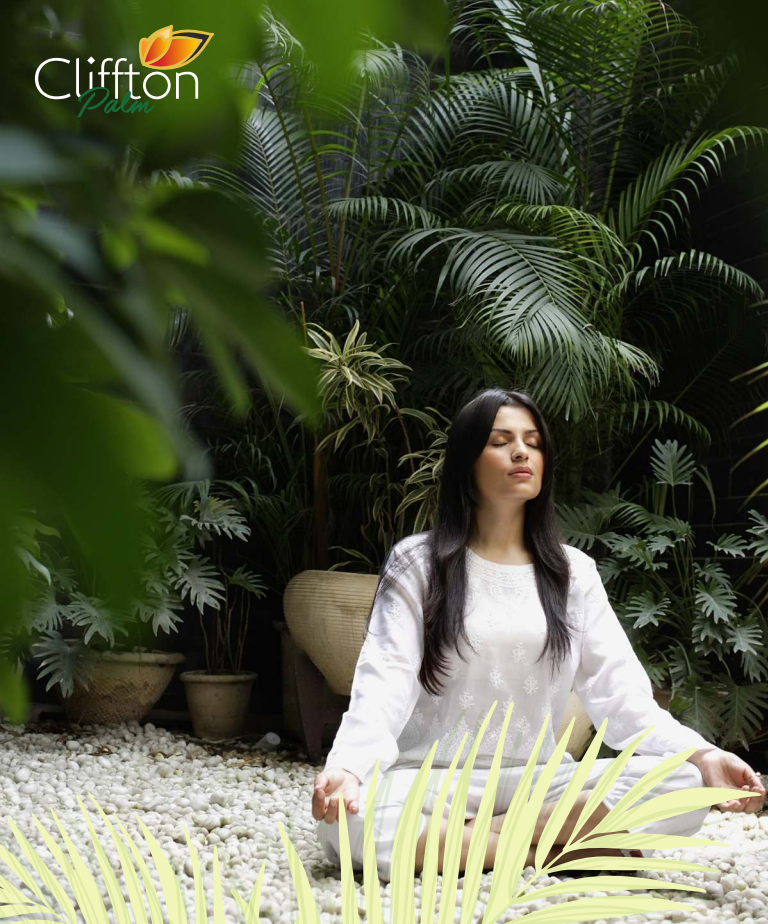
UNVEILING THE LIFESTYLE OF OPULENCE

Created for the modern lifestyle,
the first look.



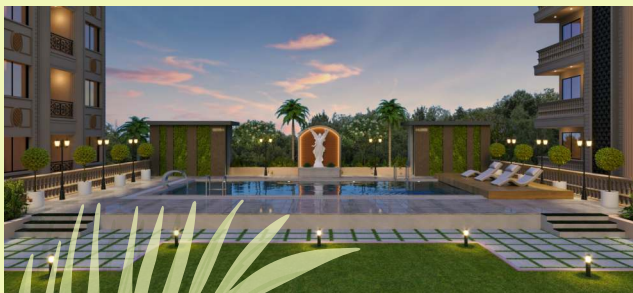
Project By
Clifton
GROUP





THE LUXURY LIFESTYLE

Immerse yourself in the epitome of luxury with premium 2, 2.5 & 3 BHK apartments. Designed for those who seek elegance and comfort, Cliffton Palm offers an exquisite living experience with top-notch amenities and lavish infrastructure.



THE LAVISH LIFESTYLE

From the majestic elevation to its lavish infrastructure, every detail at Cliffon palm exudes opulence and sophistication. Every corner at Cliffon palm adorned with exquisite touches, ensuring an experience that embodies the highest standards of luxury.



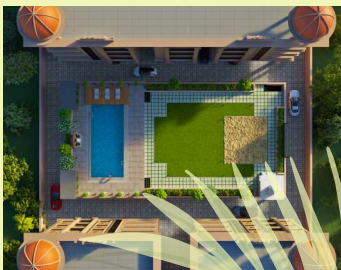
THE GRAND LIFESTYLE

Crafted for those with a penchant for grandeur, The Cliffton Palm boasts an elevation and infrastructure of sophistication, featuring world-class interior design tailored to elevate your experience to new heights of refinement and luxury.



THE MEMORABLE LIFESTYLE

Celebrate the essence of life at Cliffton palm alongside your cherished ones and craft the enduring memories to cherish eternally. Soak up the joy, embrace the fun, and celebrate the beauty of life together.



THE JOYFUL LIFESTYLE

At Clifton Palm, immerse yourself in a world of convenience with an array of top-tier amenities designed to enhance your everyday living experience.



Podium Pool



Secured Campus



Temple



Gymnasium



Kids Play Area



Lush Green Garden



Indoor Games



Community Hall



Open theatre

THE PEACEFUL LIFESTYLE



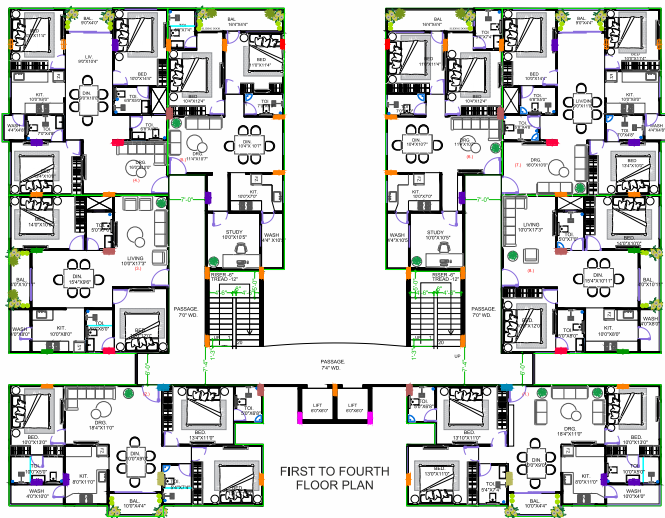
Temple



Open theatre

THE WELL-PLANNED LIFESTYLE

FIRST TO FOURTH FLOOR PLAN



FLAT NO.	1	2	3	4	5	6	7	8
FLAT TYPE	3 BHK	3 BHK	2 BHK	3 BHK	2.5 BHK	2.5 BHK	3 BHK	2 BHK
SU.BP	1612 SQ. FT.	1612 SQ. FT.	1324 SQ. FT.	1566 SQ. FT.	1414 SQ. FT.	1414 SQ. FT.	1566 SQ. FT.	1324 SQ. FT.



Site: Near Main RE2 Road, Scheme No. 140,
Bicholi Mardana, Indore (MP)

Call: 89628 02797

Disclaimer: This is draft brochure of the projects this is meant only for internal promotion purpose and has no legal value. The plans, specifications, images and other details herein are only indicative and subject to the approval of the concerned authorities. The Developer/Owner reserves the right to change any or all of these or extend the number of floors in the interest of the development, without prior notice or obligation. Artists' impressions are used to illustrate the amenities, specification, image and other details and these may be applicable to select apartments only. All brands stated are subject to final decision of the project architect. This printed material does not constitute an offer and/or contract of any type between the developer/owner and the recipient. Any purchase/leasee of this development shall be governed by the terms and conditions of the Agreement for Sale/Leasee entered into between the parties, and no detail mentioned in this printed material shall in any way govern such transaction.